



sps|envirowall
TOTAL RENDERING SOLUTIONS

Wall System 2

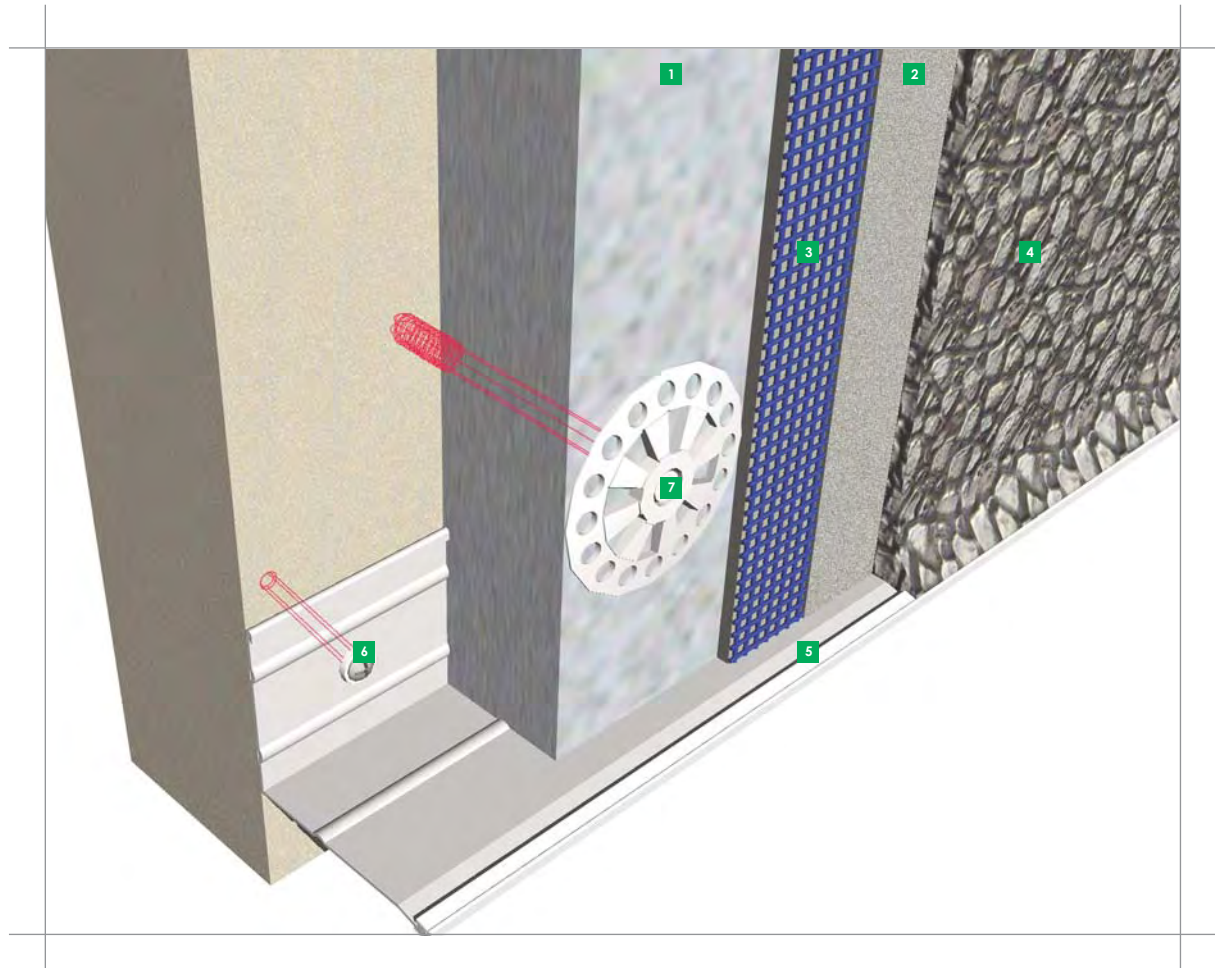
Applied to Masonry

3rd Edition, 2010

Wall System 2 Applied to Masonry

The Wall System 2 range of systems is designed to provide cost effective robust external wall insulation systems ideally suited for the refurbishment of social housing.

All of the Wall System 2 ranges of systems incorporate a polymer modified basecoat.



Basecoat

Retrobase

Polymer modified cementitious base coat applied 4/8mm thick incorporating a plastic coated reinforcing glass mesh.

Topcoats

Envirodash

An extensive range of dash finishes and compatible mortars.

Ecorend

A range of through colour floated renders providing a lightly textured decorative finish.

Envirobrick

A range of brick simulated renders to match most available brick types. This effective and cost efficient method of upgrading the thermal performance of solid walled brick properties without changing the visual appearance of the property. Finishes can be achieved that would need an expert to tell the difference from original brickwork.

1 Insulation Board Typical 1200mm* 600mm No cut boards less than 200mm width to be used. Type and thickness to be determined.

2 Basecoat 4-8mm Retrobase Polymer Basecoat.

3 Reinforcement Mesh Overlapped 100mm. Extra Patches at doors and windows.

4 Top Coat 6mm Coat of Envirodash High Polymer. Dash Receiver. Aggregate, 3-8mm

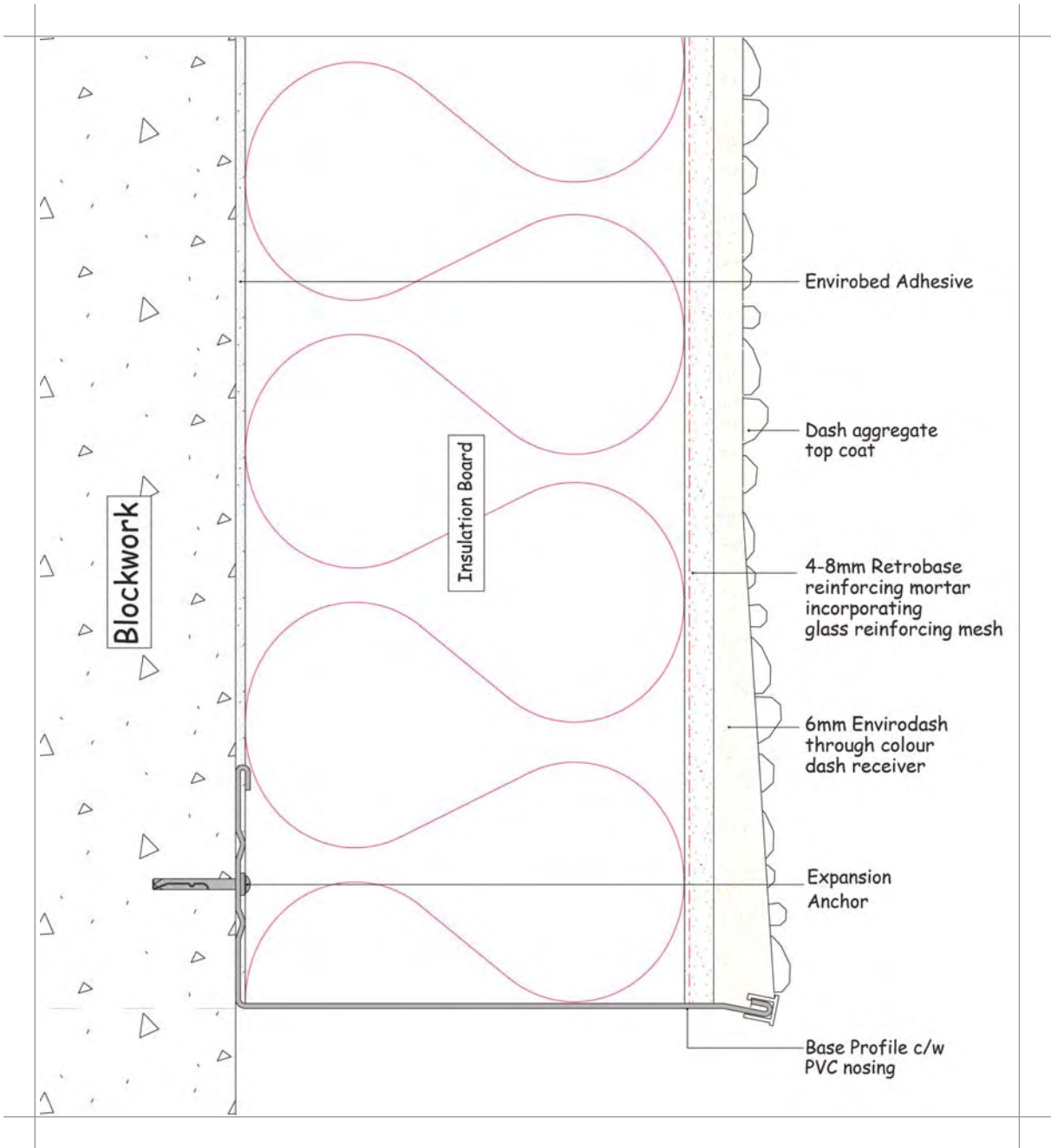
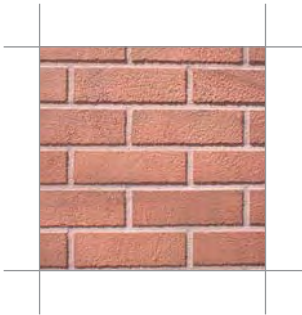
5 Base Bead Powder Coated Galvanised Steel with PVC nose. 2.5m or 3m lengths Wherever possible PVC noses should slide across the joint between two lengths to help maintain a true line. Stainless steel alternative available. Oversized Base Bead to form bellcast (20mm)

6 Base Bead Fixing 6mm hammerfix, length and type to be determined by substrate, Maximum 600mm centres. **Minimum length 60mm, hole must be minimum 10mm longer than fixing**

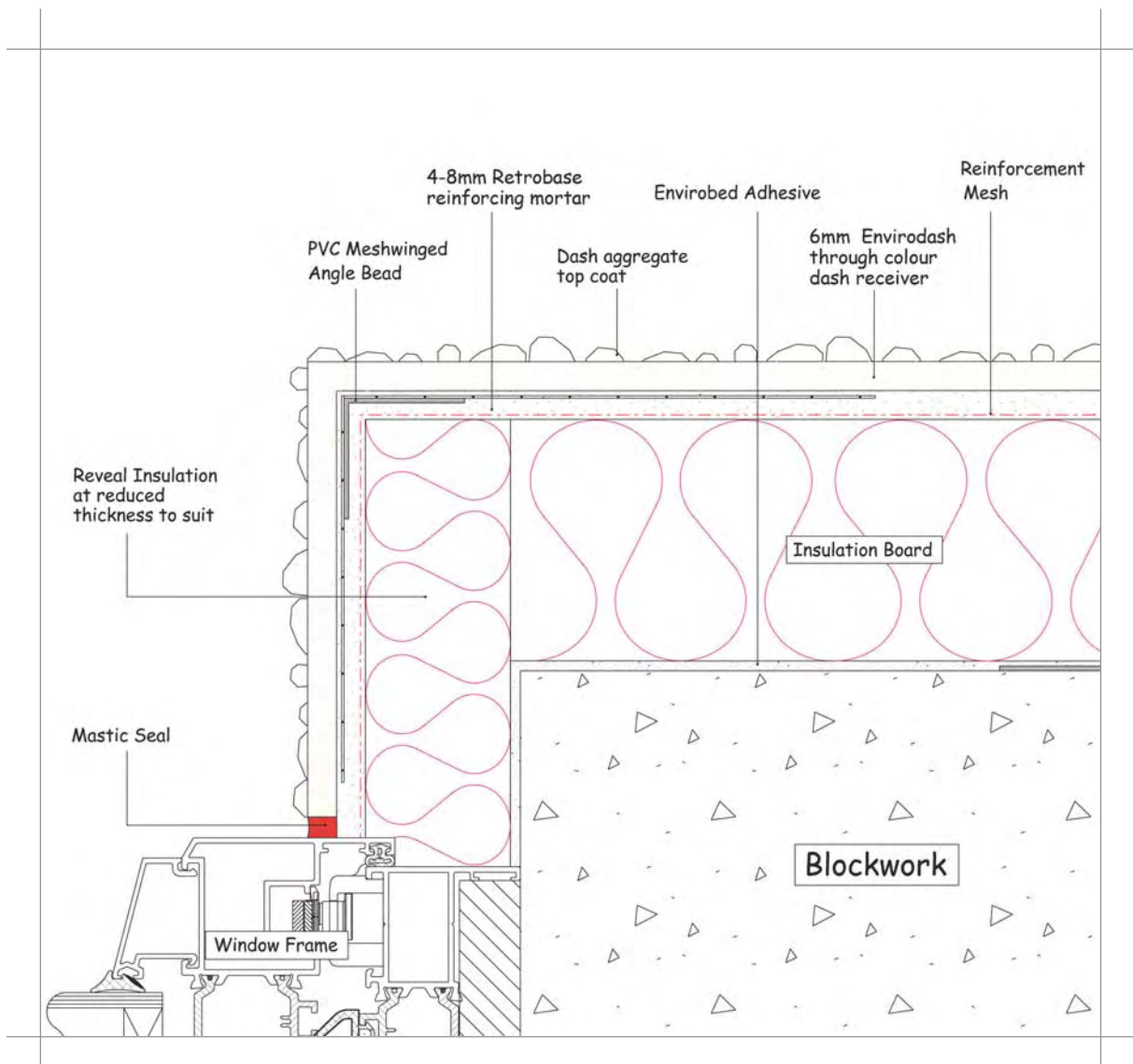
7 Insulation Fixing Exact type and length to be determined by system and substrate. 60mm head **minimum embedment 35mm**. For fixing pattern see relevant detail sheet

NOTE: In certain circumstances insulation boards will need to be adhesive and mechanically fixed.

Wall System 2 Applied to Masonry



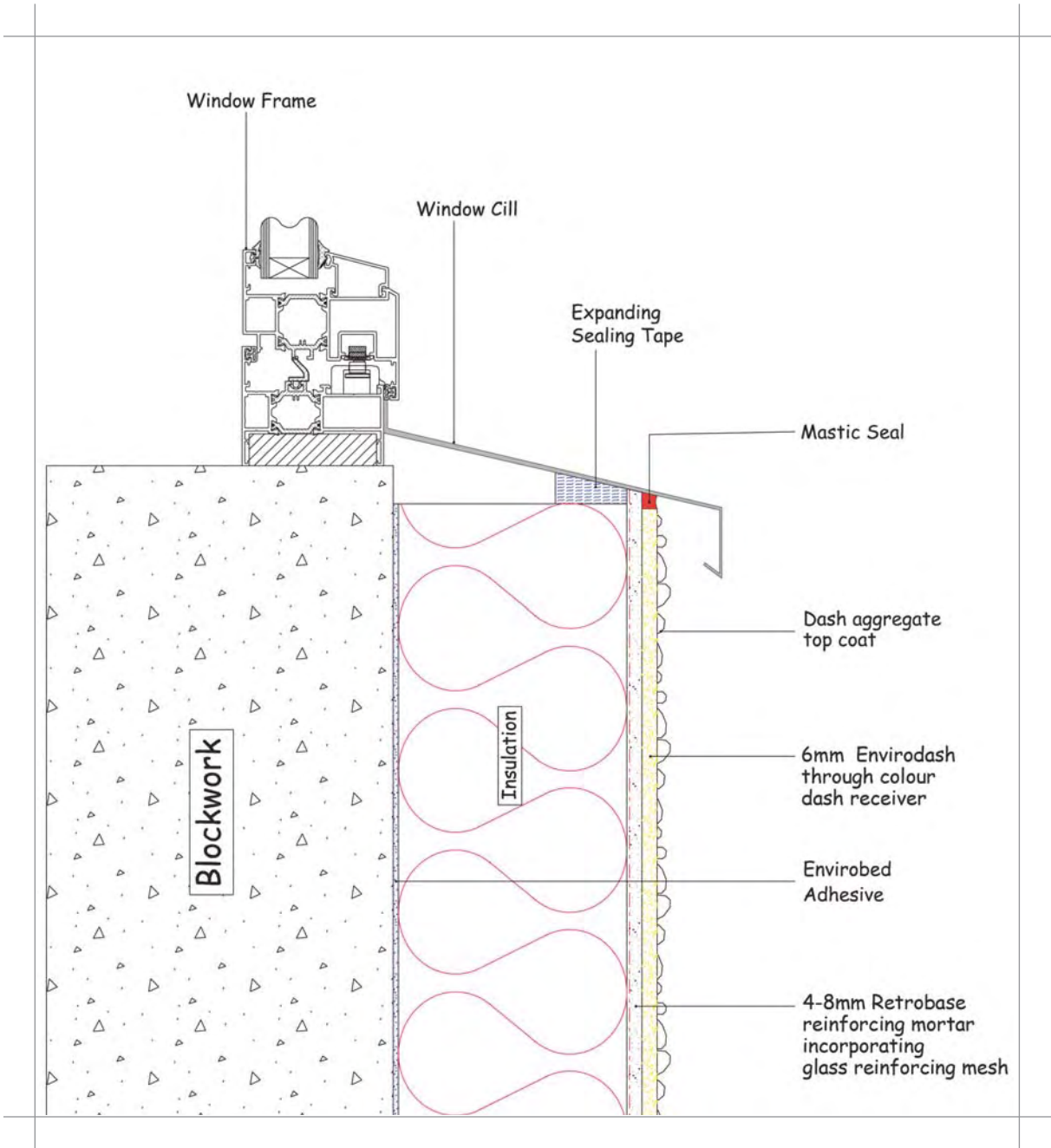
Wall System 2 Applied to Masonry

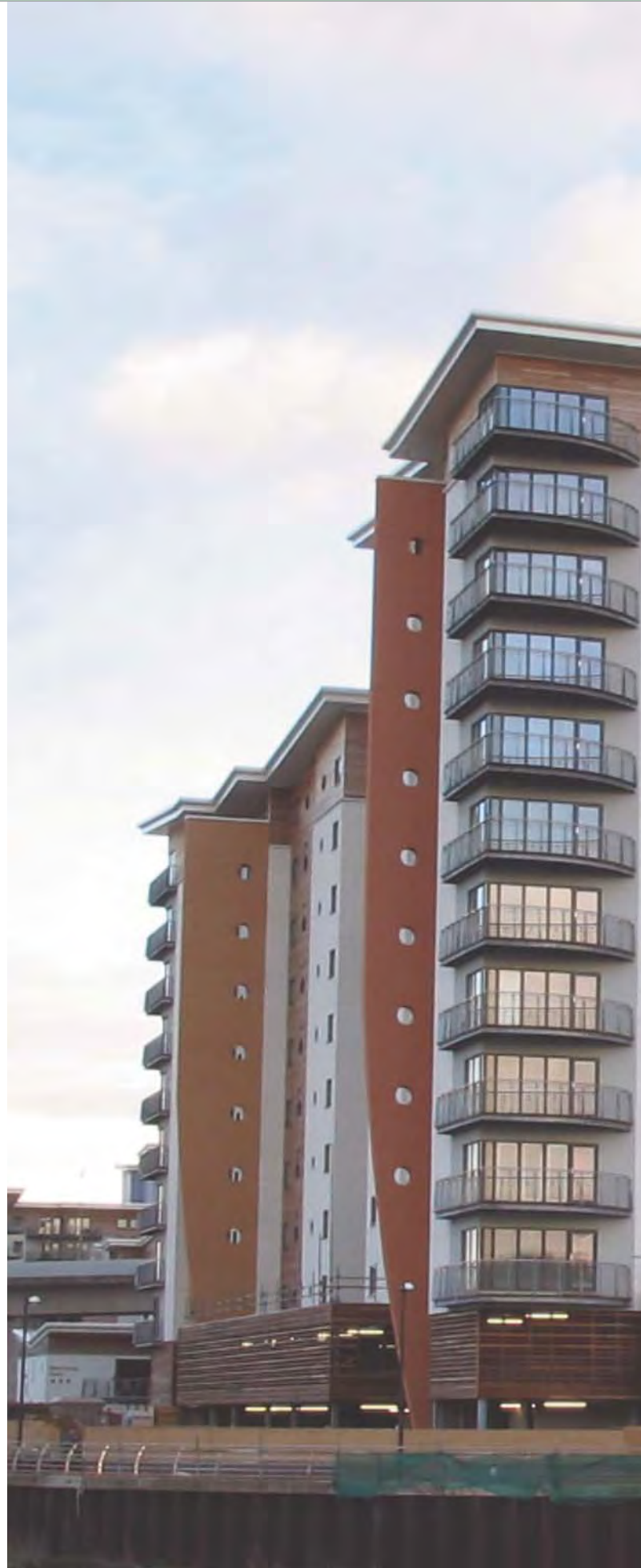


- Cost effective
- Durable
- High impact resistance



Wall System 2 Applied to Masonry





Luxury Apartments, Victoria Wharf, Cardiff Bay



■ **sps|envirowall** (Wales Office)
UNIT C6.3
Treforest Industrial Estate
South Wales
CF37 5UD

■ **sps|envirowall**
25/26 Rosevale Road
Parkhouse Ind Est West
Newcastle under Lyme
Staffordshire. ST5 7EF

■ **sps|envirowall** (Head Office)
Orchard House
Aire Valley Business Centre
Keighley - Yorkshire
BD21 3DU
T : 01535 661 633
F : 01535 661 933
E : info@envirowall.co.uk
W : www.envirowall.co.uk