



sps|envirowall
TOTAL RENDERING SOLUTIONS

Wall System 1

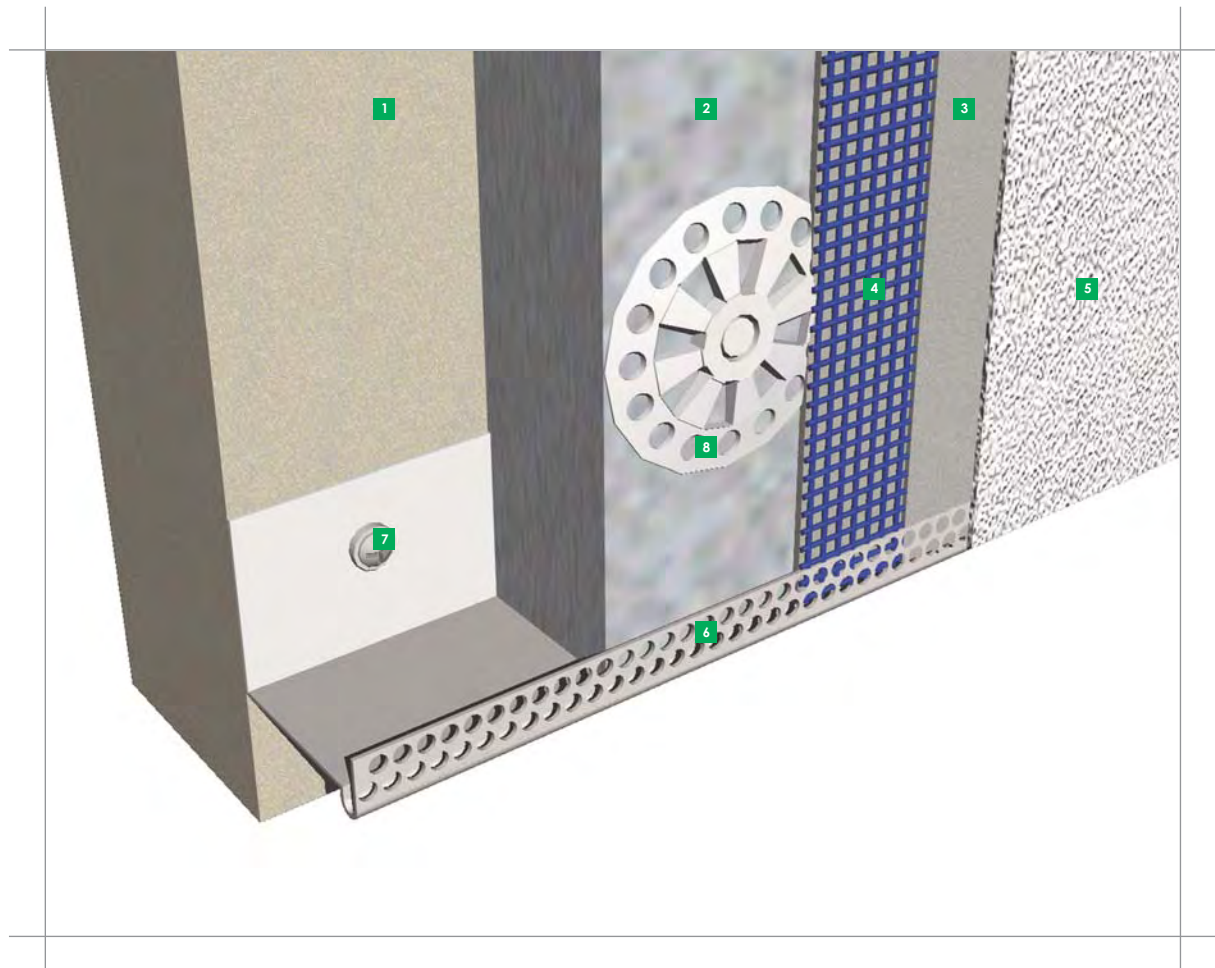
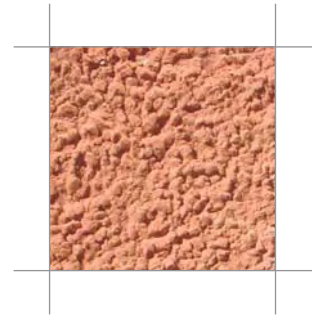
Applied to Masonry

3rd Edition, 2010

Wall System 1

Applied to Masonry

Wall system 1 is a range of thin coat external wall insulation systems that provide exceptional weathering and crack resistant properties combined with an inexhaustible range of colours ideally suited for the modern designer.



Topcoats

Envirocryl

Acrylic polymer based top coat supplied in various grain sizes offering a highly water repellent finish in a wide range of colours.

Envirosil

Silicone based top coat supplied in various grain sizes in a range of colours offering greater water repellency, vapour permeability and lower dirt retention.

Ecorend

Mineral Top Coat – a cost effective alternative to silicone and acrylic finishes offered in a range of textures in pastel shades. Giving exceptional fire performance.

Additional Impact Resistance

Additional impact resistance can be imparted to the system by incorporating an extra reinforcing layer with high impact meshes. For the highest level of impact resistance a 9mm RenderClad board or equivalent is fitted on top of the insulation prior to installation of the renders.

- 1 Adhesive Mortar** 3-5mm Envirobed high polymer adhesive. Applied with 8mm tooth trowel.
- 2 Insulation Board** Typical type and thickness to be determined.
- 3 Basecoat** 3-5mm Envirorend High Polymer Basecoat. Applied with 8mm tooth trowel
- 4 Reinforcement Mesh** Overlapped 100mm. Extra Patches at doors and windows.
- 5 Primer & Top Coat** 1.5-3mm grain Envirocil/Envirocryl finish. Trowel applied, thickness determined by grain size. Available in different textures.
- 6 Base Bead** Aluminium or stainless steel. Fixed at 600mm centres. Front lip is embedded into render to lock position and strengthen the edge. Supplied in 2.5 and 3 metre lengths.
- 7 Base Bead Fixing** 6mm hammerfix, length and type to be determined by substrate. Maximum 600mm centres. **Minimum length 60mm, hole must be minimum 10mm longer than fixing**
- 8 Insulation Fixing** Exact type and length to be determined by system and substrate. 60mm head **minimum embedment 35mm**. For fixing pattern see relevant detail sheet

Wall System 1

Applied to Masonry

Adhesive

Envirobed

A highly polymer modified OP cement for the adhesion of insulation boards. It offers extremely high levels of strength, adhesion and durability. It can be comb applied 3 to 5mm thick to the back of the insulation board or for uneven substrates can be applied in dabs up to 20 mm thick.

Envirobed should only be used as an adhesive and never as a reinforcing base coat.

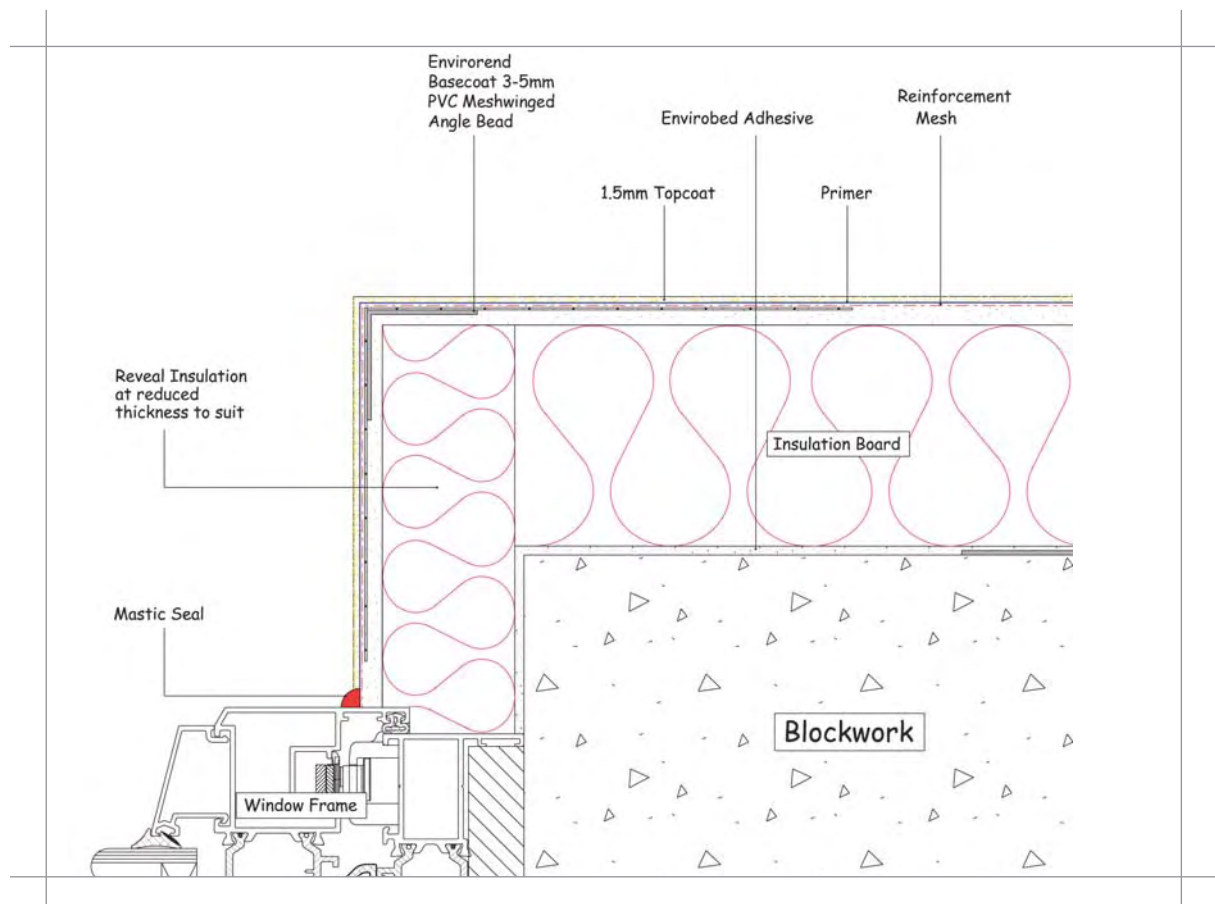
Basecoats

Envirorend

A highly polymer modified OP cement. It contains special fillers to impart high levels of strength and durability with very little shrinkage. It is applied 3 to 5mm thick incorporating a plastic coated glass reinforcing mesh.

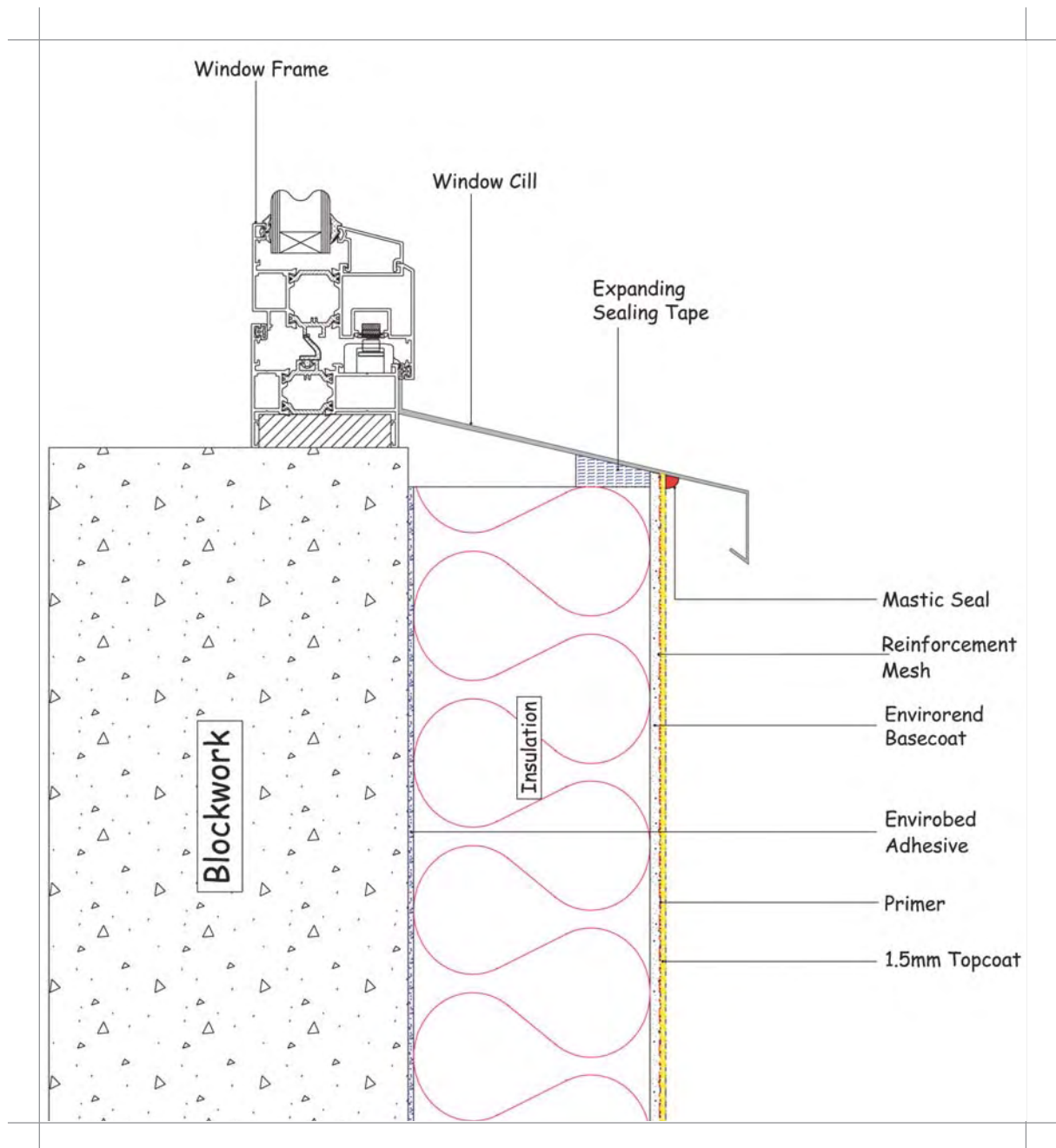
Scolofax

A cement free, acrylic reinforcing base coat. It is applied 3mm thick with a serrated trowel incorporating a plastic coated glass reinforced mesh.

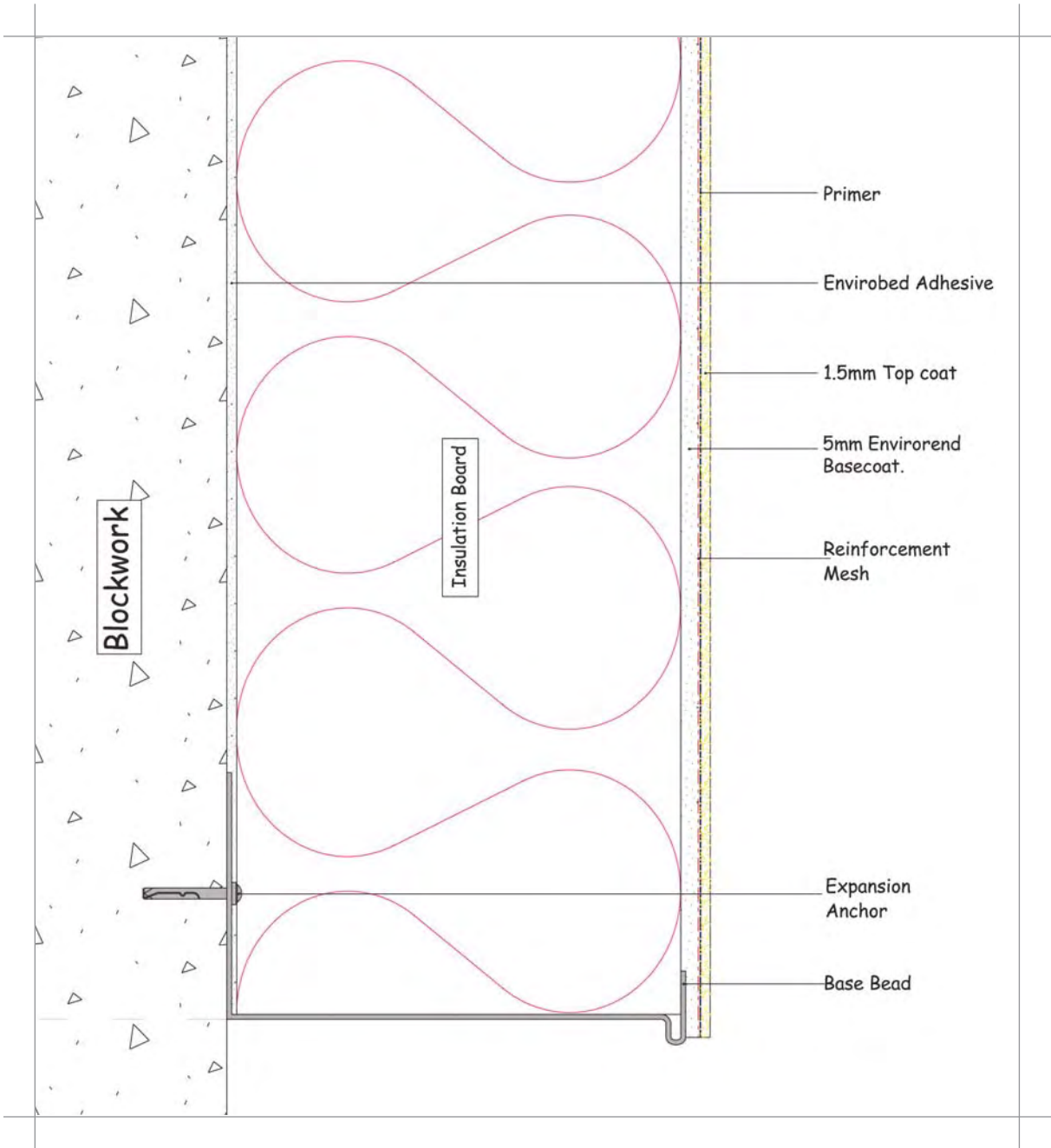


- Highly flexible anti-crack renders
- Excellent weathering characteristics
- Extensive colour range

Wall System 1 Applied to Masonry

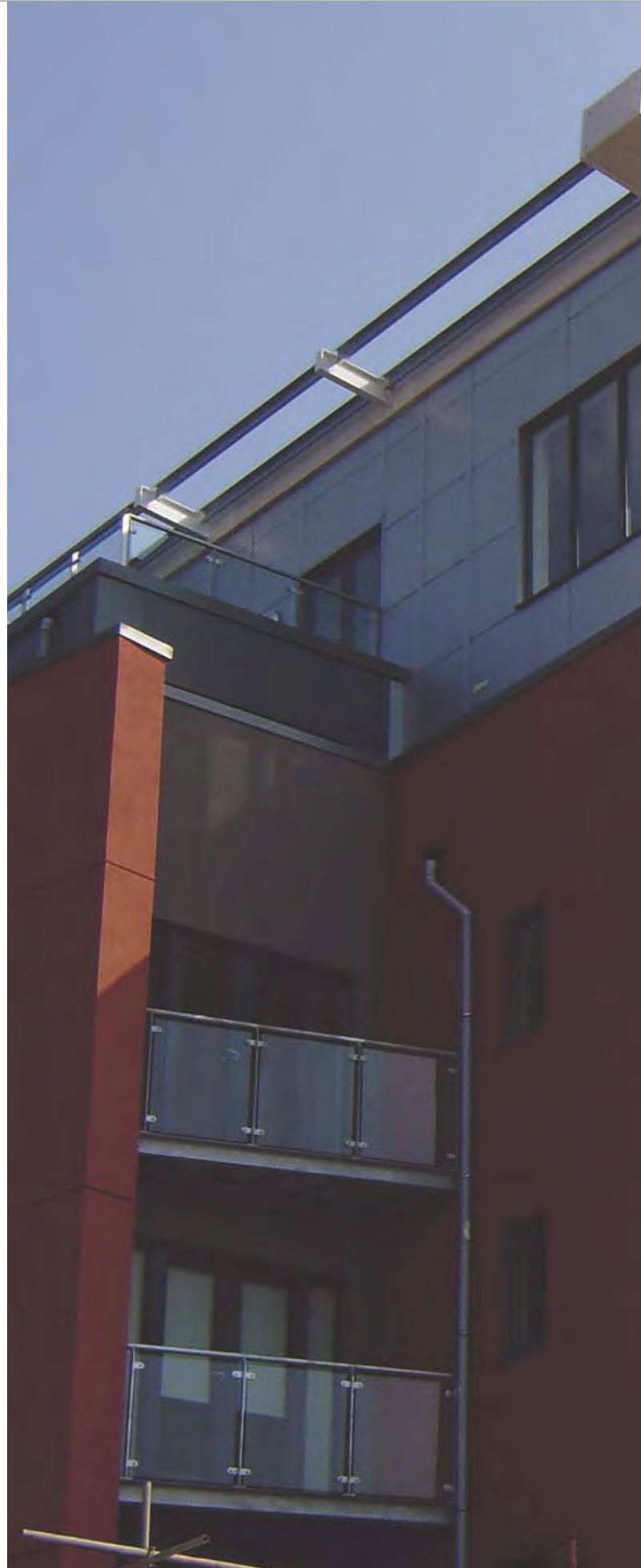


Wall System 1 Applied to Masonry





Luxury Apartments, Swansea





■ **sps|envirowall** (Wales Office)
UNIT C6.3
Treforest Industrial Estate
South Wales
CF37 5UD

■ **sps|envirowall**
25/26 Rosevale Road
Parkhouse Ind Est West
Newcastle under Lyme
Staffordshire. ST5 7EF

■ **sps|envirowall** (Head Office)
Orchard House
Aire Valley Business Centre
Keighley - Yorkshire
BD21 3DU
T : 01535 661 633
F : 01535 661 933
E : info@envirowall.co.uk
W : www.envirowall.co.uk